

# PARK & BELCHER HARD CORNER

SWC of Park Blvd. & Belcher Rd. • Pinellas Park, FL



## LOCATION:

7100 Park Blvd. N.  
Pinellas Park, FL

## FEATURES:

- Prominent signalized intersection at Park Blvd. & Belcher Rd., Pinellas Park, Pinellas County, FL
- ADT of 51,500 along Park Blvd. (E/W) and 20,000 along Belcher Rd. (N/S)
- Strong demographics with population of 101,513 and an average household income of \$59,233 in a 3-mile radius

## TRAFFIC COUNTS:

- Park Blvd.: 51,500 A.D.T. (E/W)
- Belcher Rd.: 20,000 A.D.T. (N/S)

## AREA RETAIL:

- Lowe's
- Sam's Club
- Publix
- CVS
- Pizza Hut
- Wachovia
- A & W / Long John Silvers

**RMC**  
PROPERTY GROUP

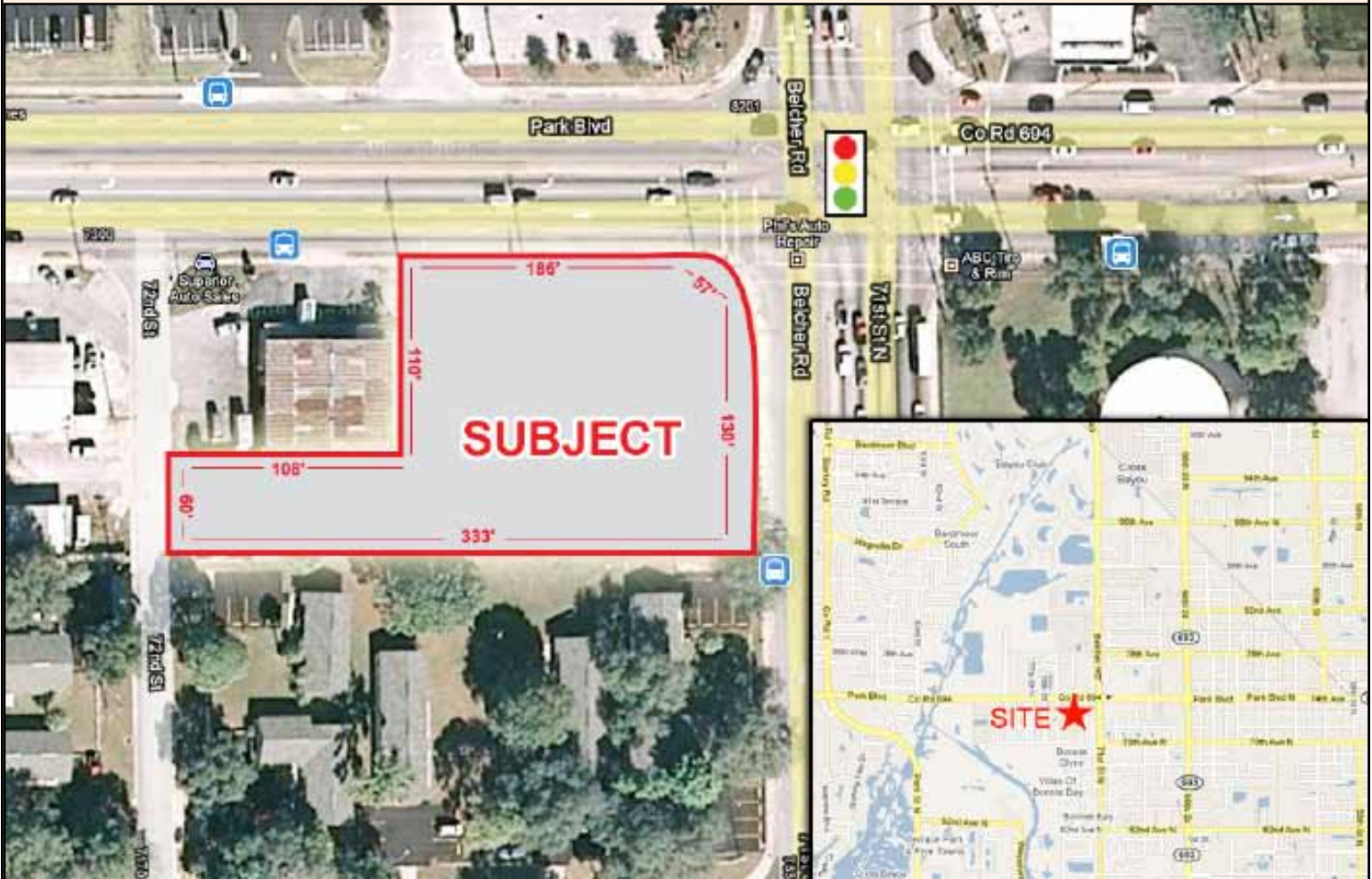
1733 W. Fletcher Ave  
Tampa, FL 33612  
P: 800.728.5379  
F: 813.963.2596  
www.RMCPCG.com

**CONTACT**  
Dan Morris  
800.728.5379 Ext. 216  
813.494.6076  
dmorris@rmcpcg.com



# PARK & BELCHER HARD CORNER

SWC of Park Blvd. & Belcher Rd. • Pinellas Park, FL



Rendering is included to provide a general depiction of space location. Site plan may not be to scale. All dimensions are approximate for illustrative purposes only and are subject to field verification.

## POPULATION:

- 1-mile: 11,311
- 3-mile: 101,513
- 5-mile: 252,835

## HOUSEHOLDS:

- 1-mile: 4,501
- 3-mile: 42,874
- 5-mile: 111,917

## AVG HOUSEHOLD INCOME:

- 1-mile: \$59,479
- 3-mile: \$59,233
- 5-mile: \$58,231

## MEDIAN AGE:

- 1-mile: 41
- 3-mile: 45
- 5-mile: 46