

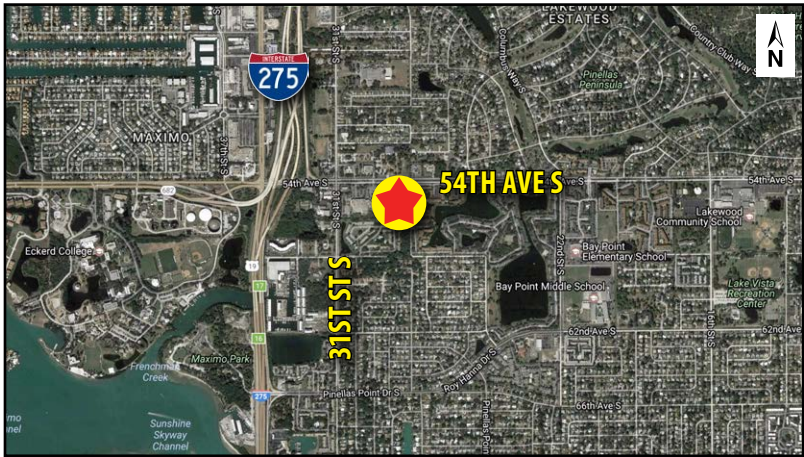
SEVILLE SQUARE

2810 – 3016 54th Ave S | St Petersburg, FL 33712



PROPERTY HIGHLIGHTS:

- Up to 2,500 SF available
- 1,500 SF former restaurant space available immediately
- Publix adjacent parcel
- Anchored by Bealls Department Store and DTLR
- Situated just east of I-275 and US Hwy 19 (two primary transportation arteries within Pinellas County)
- Shopping center total GLA: 75,313 SF (MOL)



KEY DEMOS	1 MILE	3 MILES	5 MILES
POPULATION			
2018 Estimated Population	12,581	68,555	154,136
2018 Estimated Households	5,681	29,411	71,397
INCOME			
2018 Est. Avg HH Income	\$65,667	\$63,526	\$67,908
AGE			
Median Age	40	42	44
TRAFFIC COUNTS			
54th Ave S (E/W)	18,700 AADT		
31st St S (N/S)	7,900 AADT		

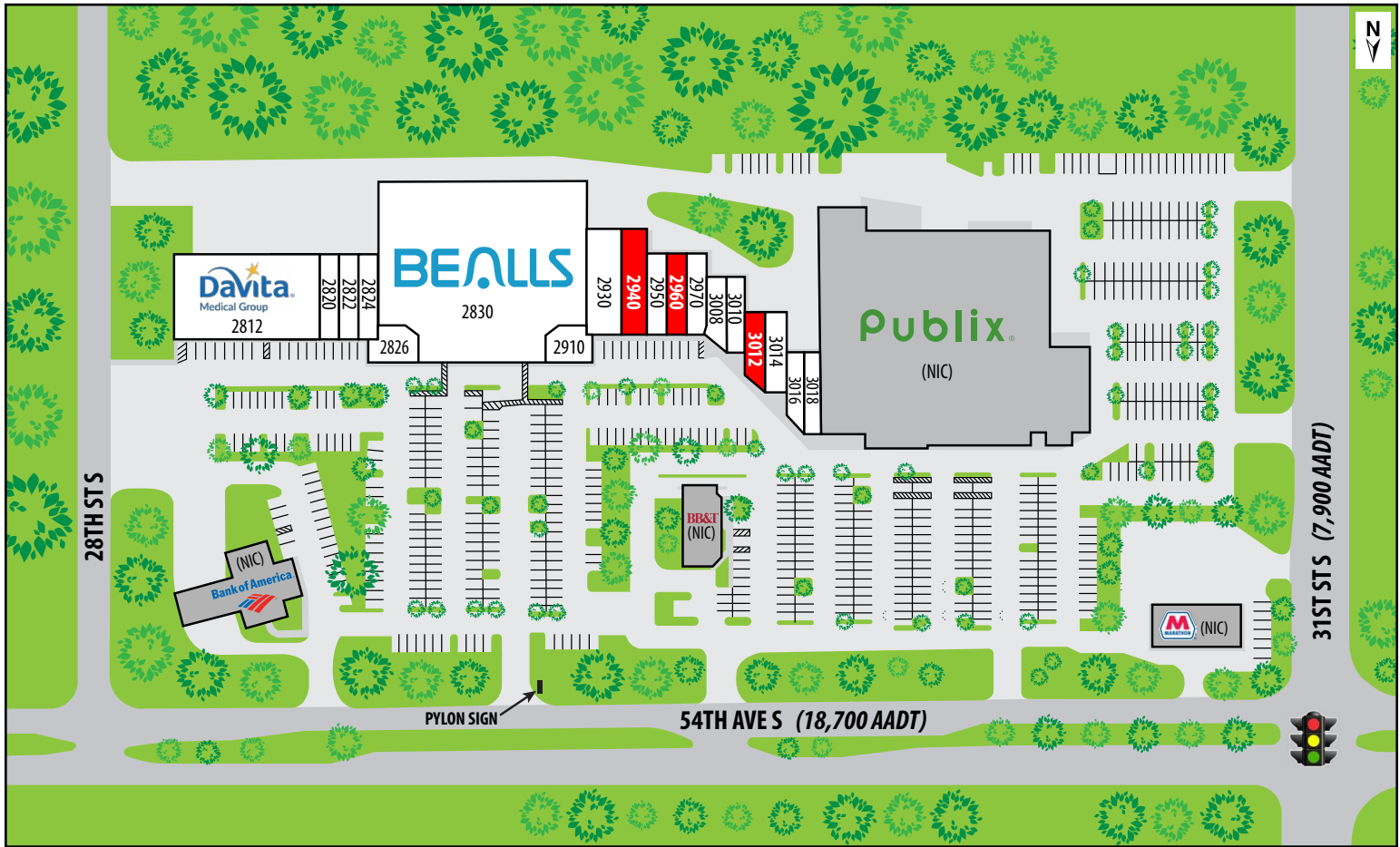


FOR LEASING INFORMATION:
 Kerri Atkins
 813.960.8154 x264
 katkins@rmcpg.com

8902 N Dale Mabry Hwy
 Tampa, FL 33614
 800.728.5379
 www.RMCPG.com

SEVILLE SQUARE

2810 – 3016 54th Ave S | St Petersburg, FL 33712



UNIT	TENANT	SF
2812	DaVita Medical Group	12,058
2820	Sunshine State AG	1,500
2822	Family Pak & Ship	1,500
2824	Westshore Pizza	1,486
2826	Hair Salon	1,422
2830	Bealls	35,541
2910	Boost Mobile	1,429
2930	DTLR	4,500
2940	AVAILABLE	2,500

UNIT	TENANT	SF
2950	H&R Block	1,500
2960	AVAILABLE (former restaurant)	1,500
2970	Easy Kleen Laundry	1,875
3008	Check `n Go	1,421
3010	Golden Krust	1,312
3012	AVAILABLE	1,337
3014	Lovely Nails	1,500
3016	Peter's Cleaners	1,391
3018	Top China	1,600

All information given herein is obtained from sources considered reliable. However, we are not responsible for misstatement of facts, errors, omissions, prior sale, withdrawal from market, modification of mortgage commitment, terms and considerations, or change in price without notice. The information supplied herein is for informational purposes only and shall not contain a warranty or assurance that said information is correct. Any person intending to rely upon the information supplied herein should verify said information independently. UPDATED: 091818



FOR LEASING INFORMATION:

Kerri Atkins
813.960.8154 x264
katkins@rmcpg.com

8902 N Dale Mabry Hwy
Tampa, FL 33614
800.728.5379
www.RMCPG.com